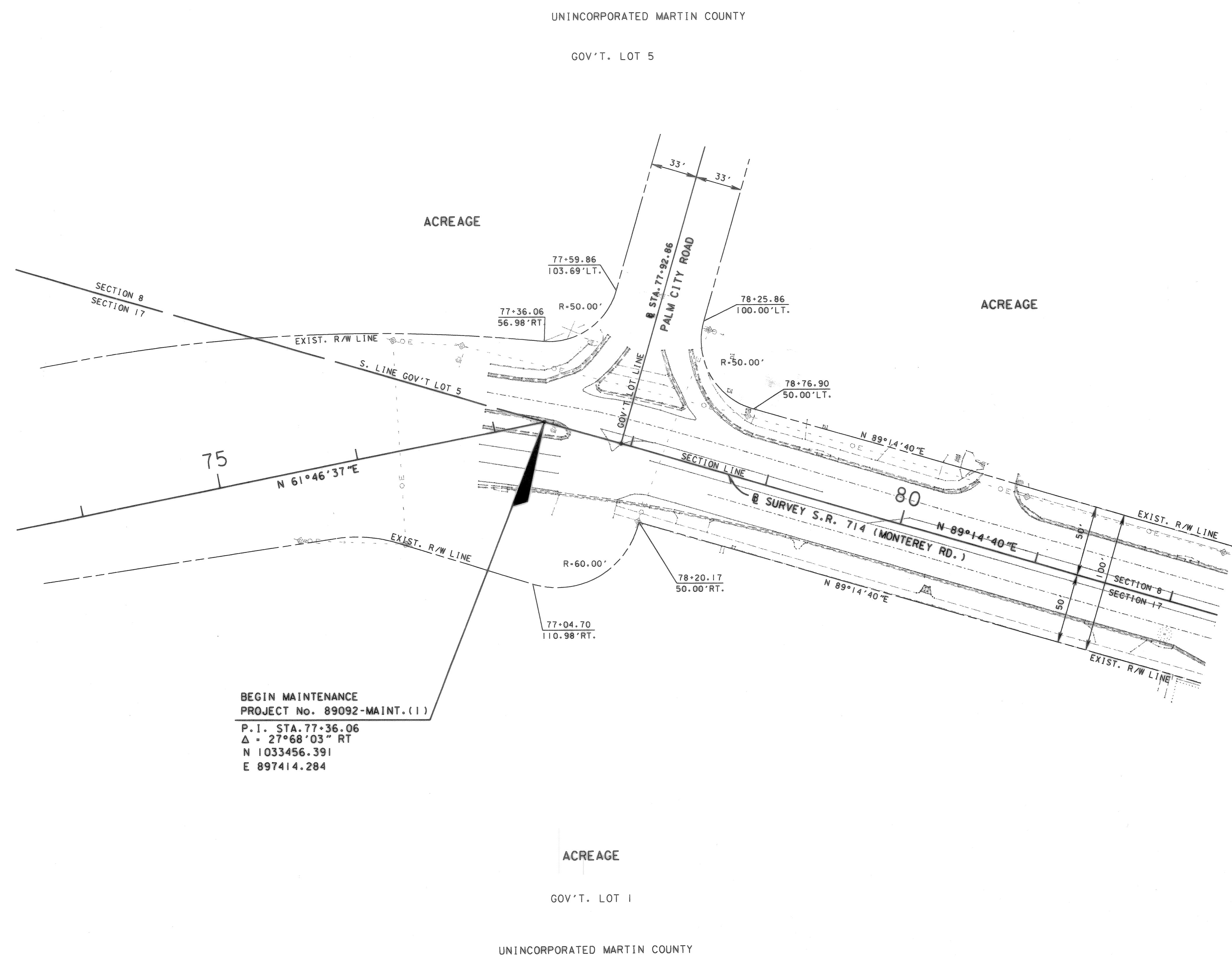


SEC. 8, TWP. 38 S., RGE. 41 E.
SEC. 17, TWP. 38 S., RGE. 41 E.



BEGIN MAINTENANCE
PROJECT No. 89092-MAINT.(1)
P.I. STA. 77+36.06
Δ = 27°68'03" RT
N 1033456.391
E 897414.284

SEE SHEET ONE FOR LEGEND AND GENERAL NOTES

S.R. 714 (MONTEREY ROAD) FROM S.W. PALM CITY ROAD TO S.R. 5 (U.S. 1-FEDERAL HIGHWAY)

MAINTENANCE MAP	FLORIDA DEPARTMENT OF TRANSPORTATION RIGHT OF WAY MAPPING	APPROVED BY <i>Jeffrey Smith</i> DISTRICT RIGHT OF WAY SURVEYOR	DATE 4/20/03	REVISION	BY	DATE	REVISION	BY	DATE	CHECKED BROWN	DATE 06-25-03	FED. PROJ. NO. N/A	SECTION 89092-MAINT.(1)	MAPS PREPARED BY F.D.O.T. DISTRICT 4	FIELD BOOK NO. 'S
												STATE ROAD NO. 714	MARTIN COUNTY	W.P.I. NO. N/A	SCALE: 1" = 40'
												ITEM/SEGMENT NO. 2288621		SHEET 2 OF 8	